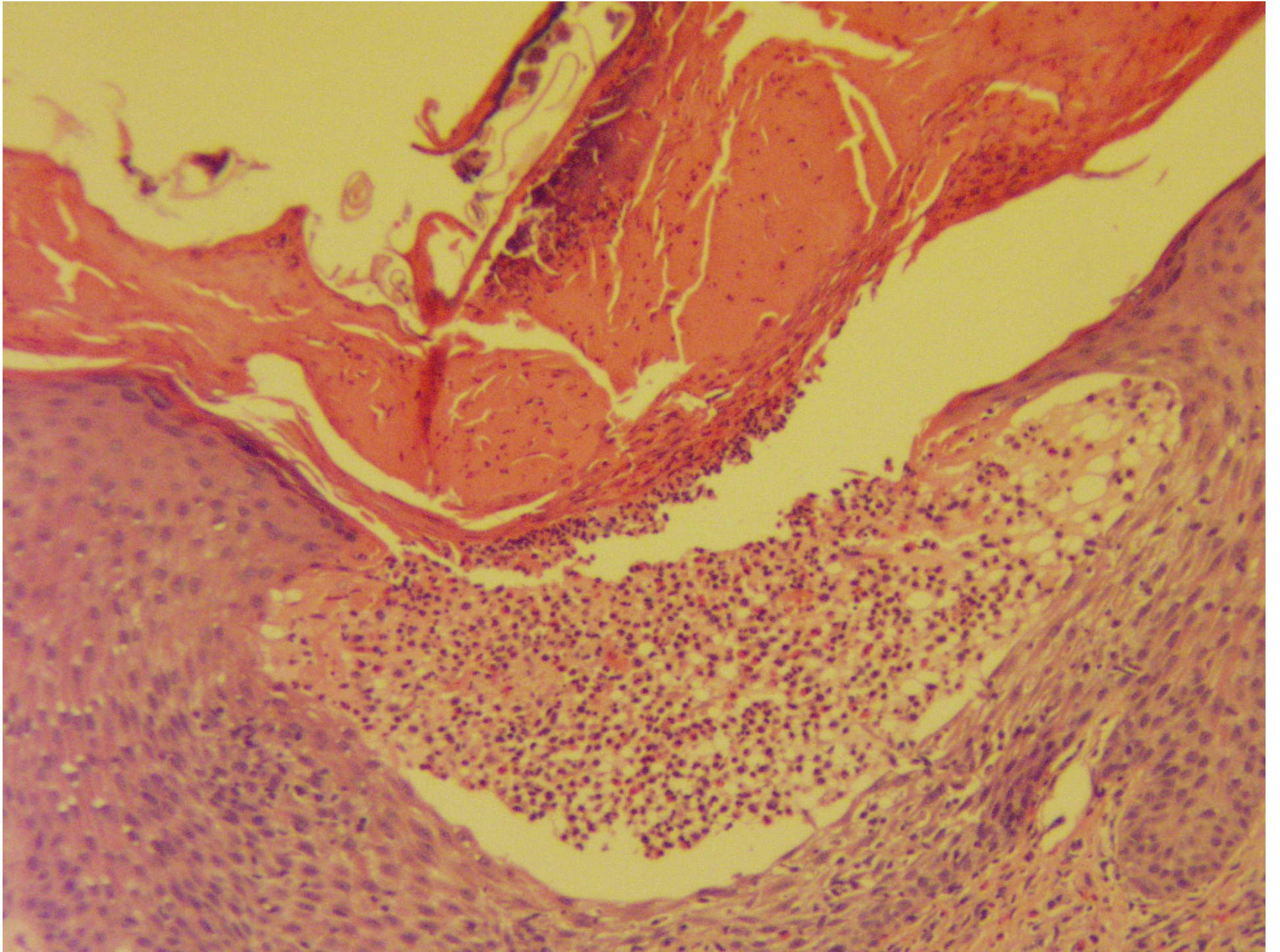
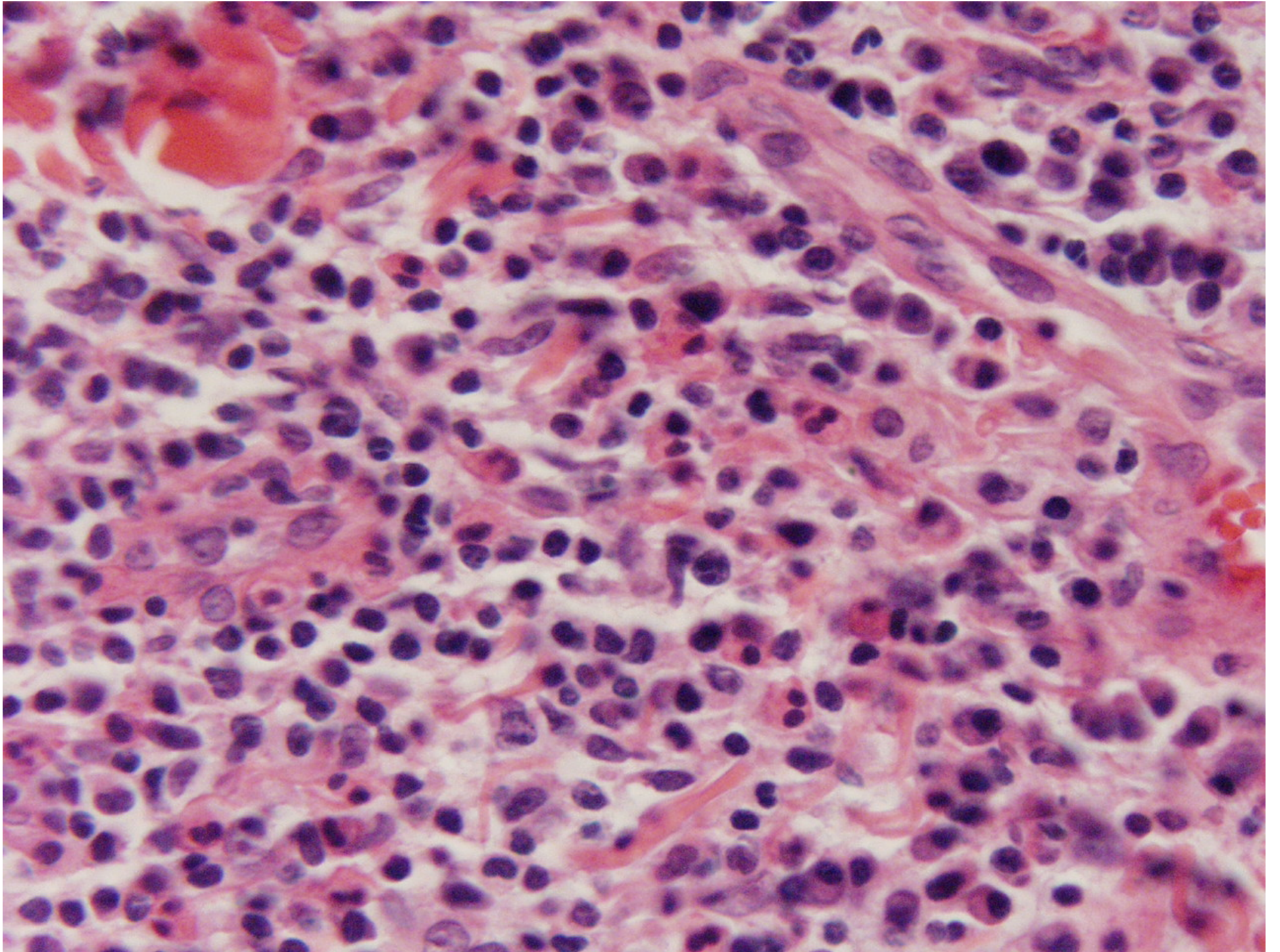
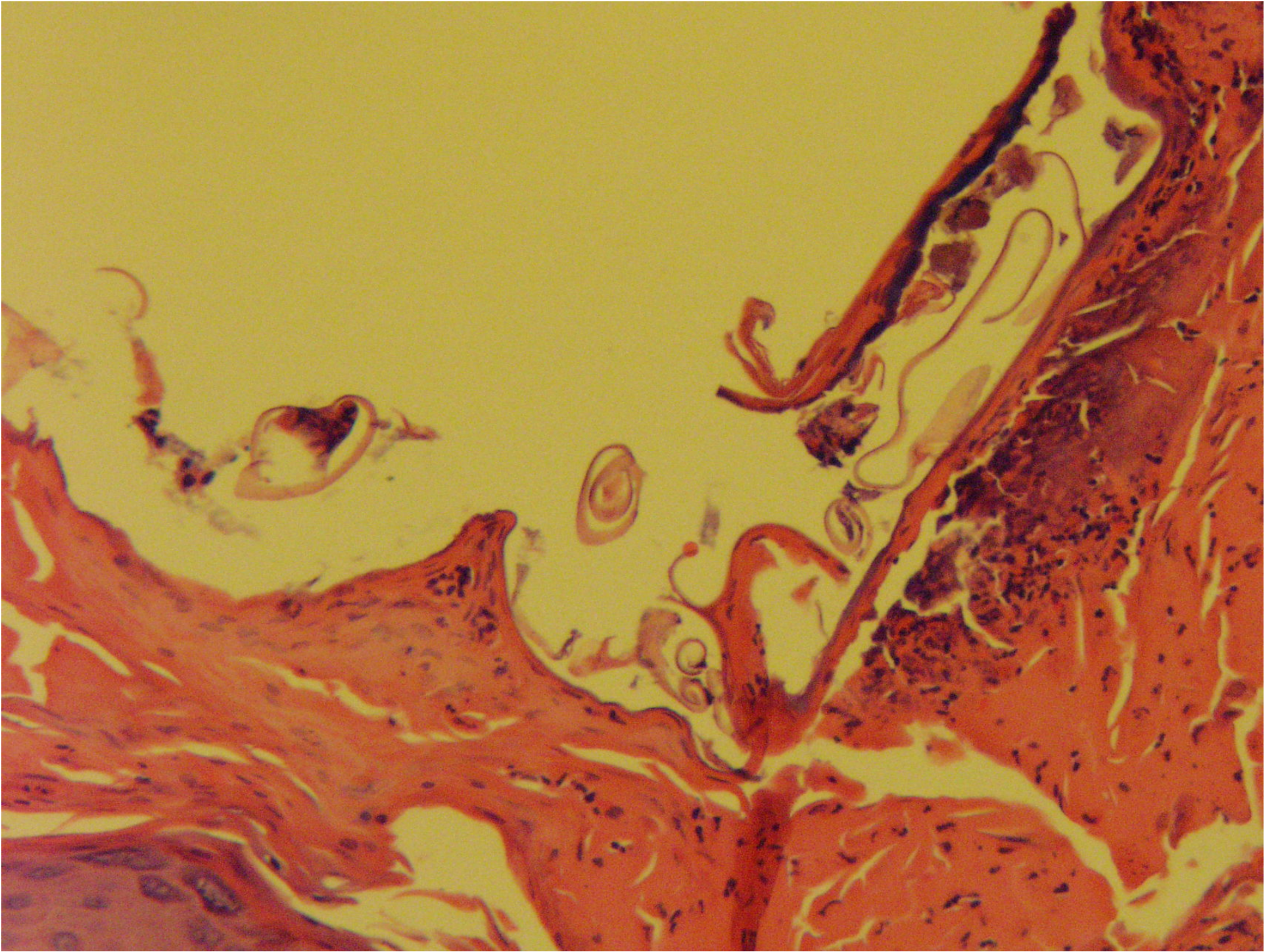


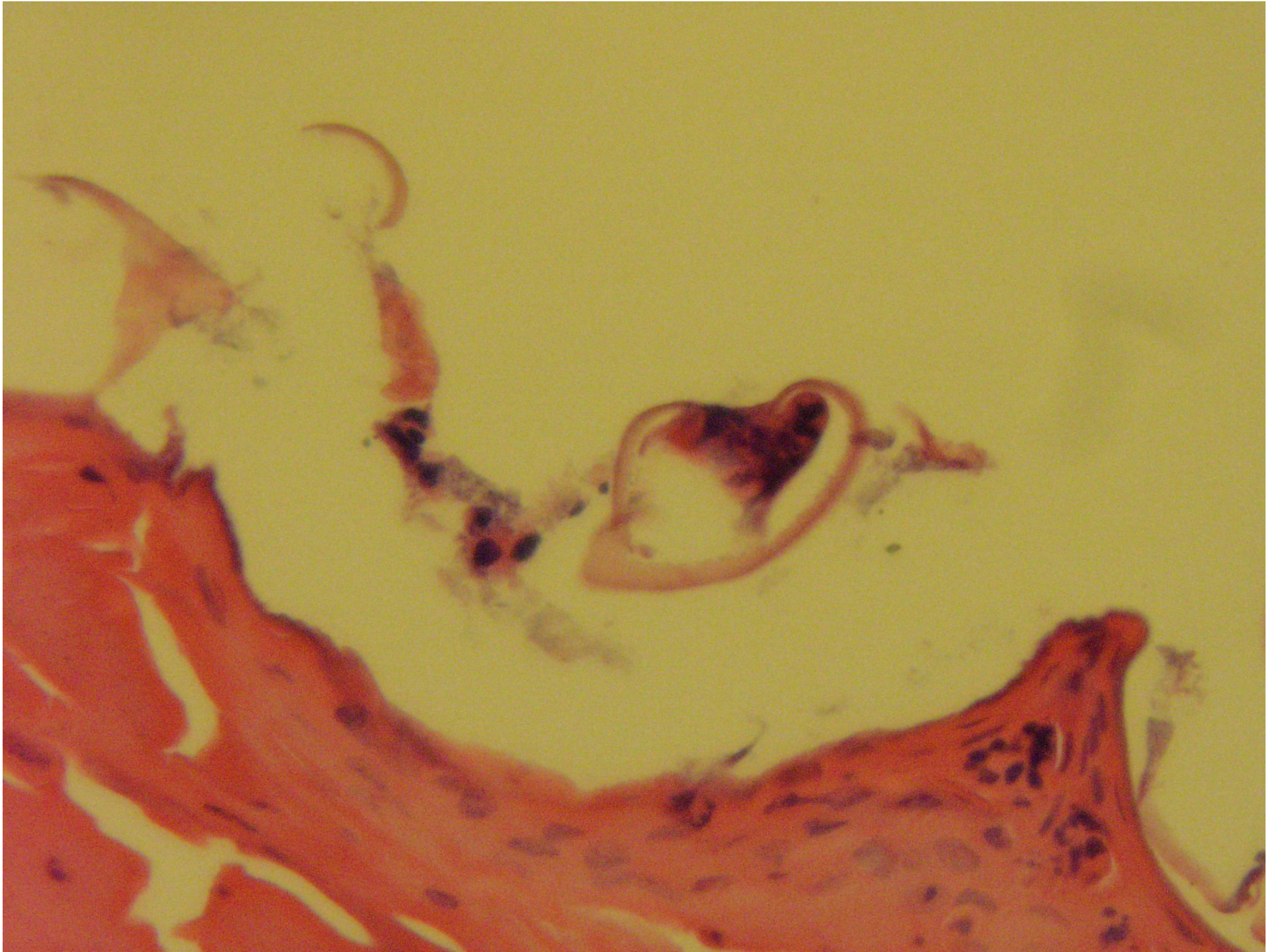
Urticarial Hypersensitivity Reaction

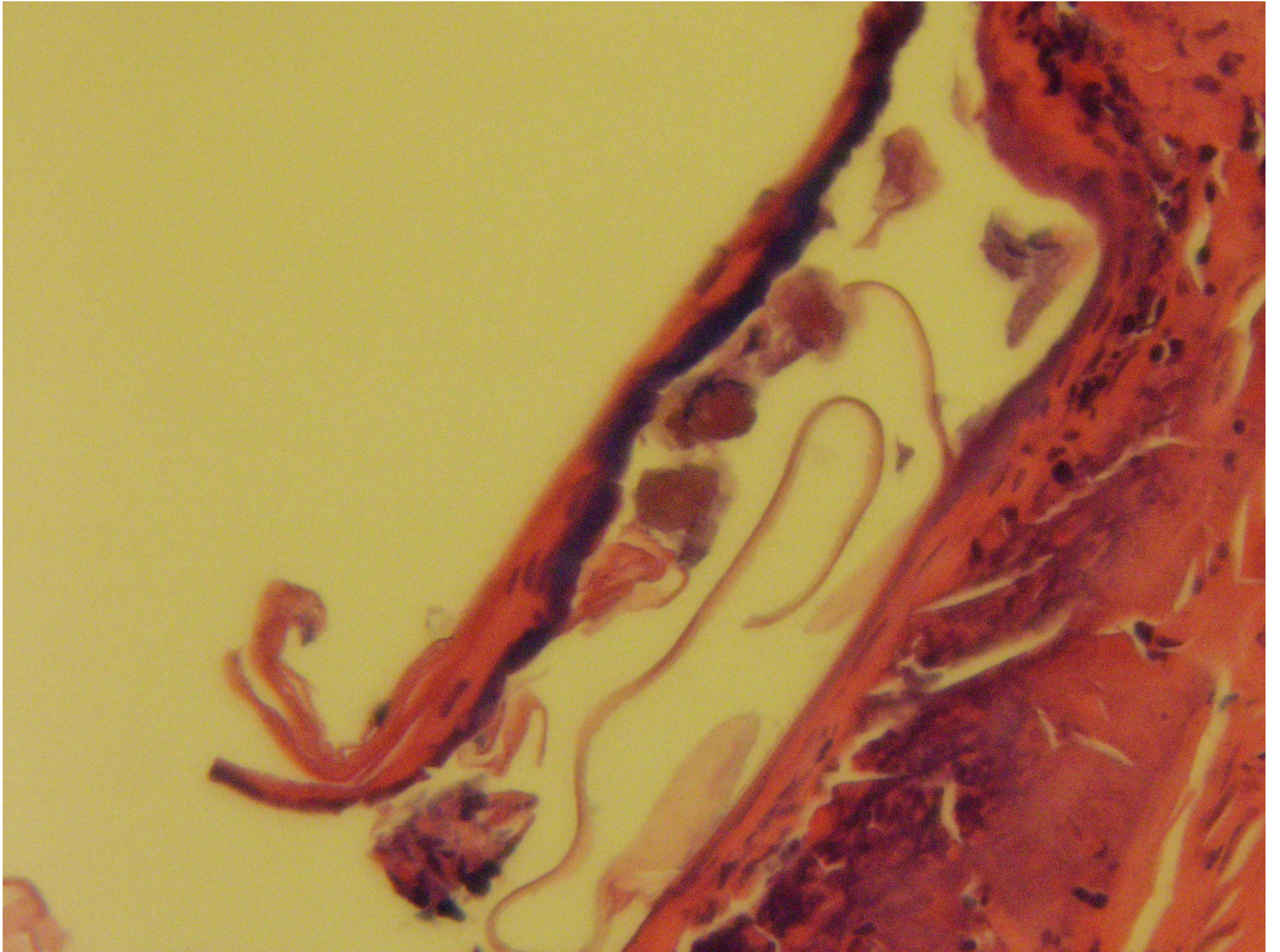
Paul K. Shitabata, M.D.
Dermatopathology Institute
Torrance, CA





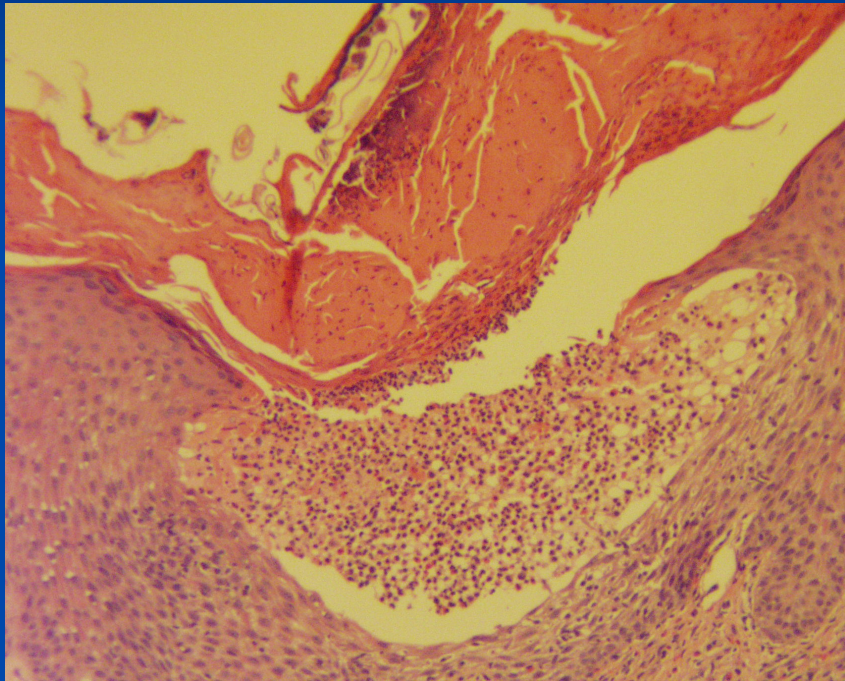




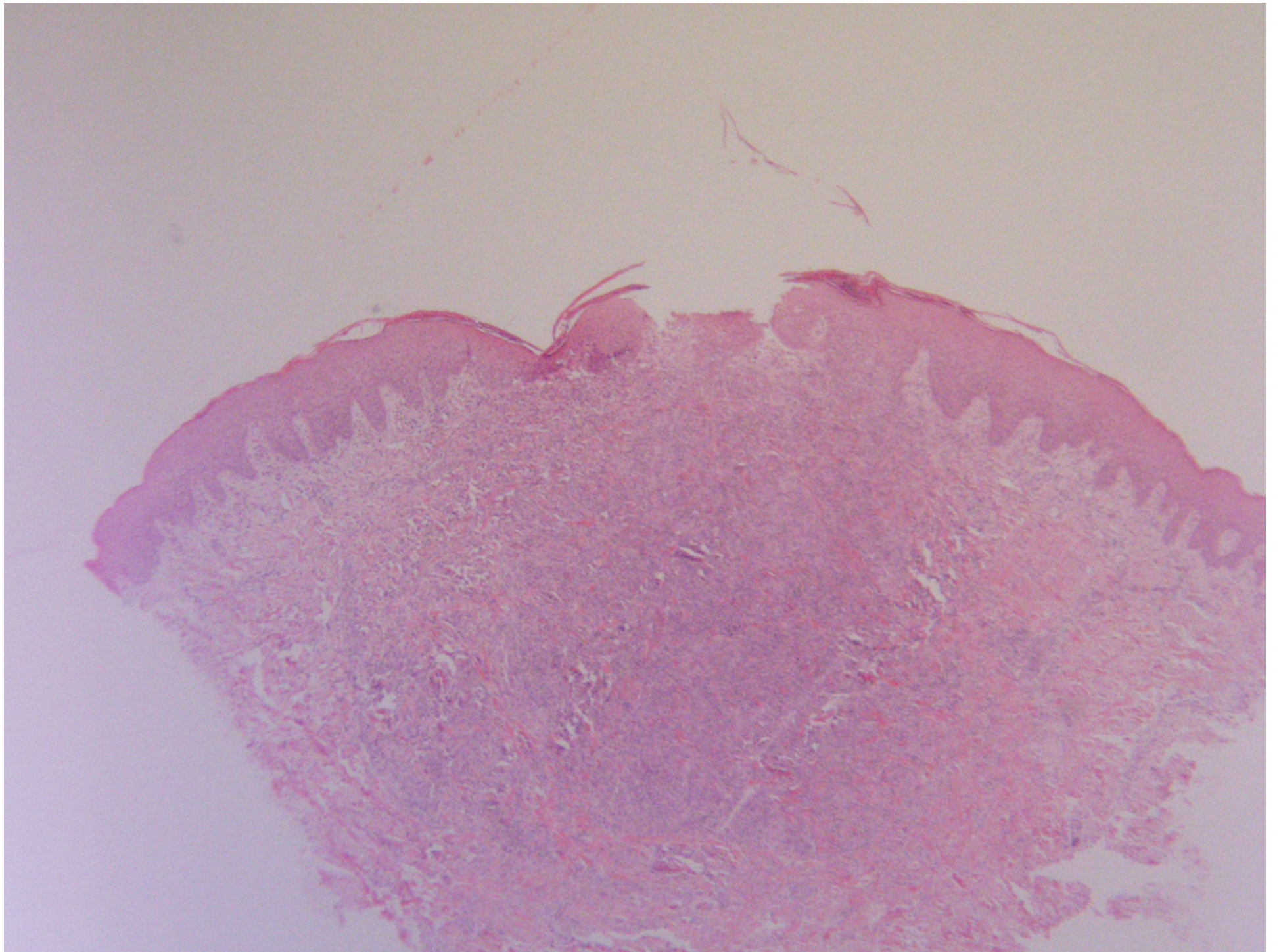


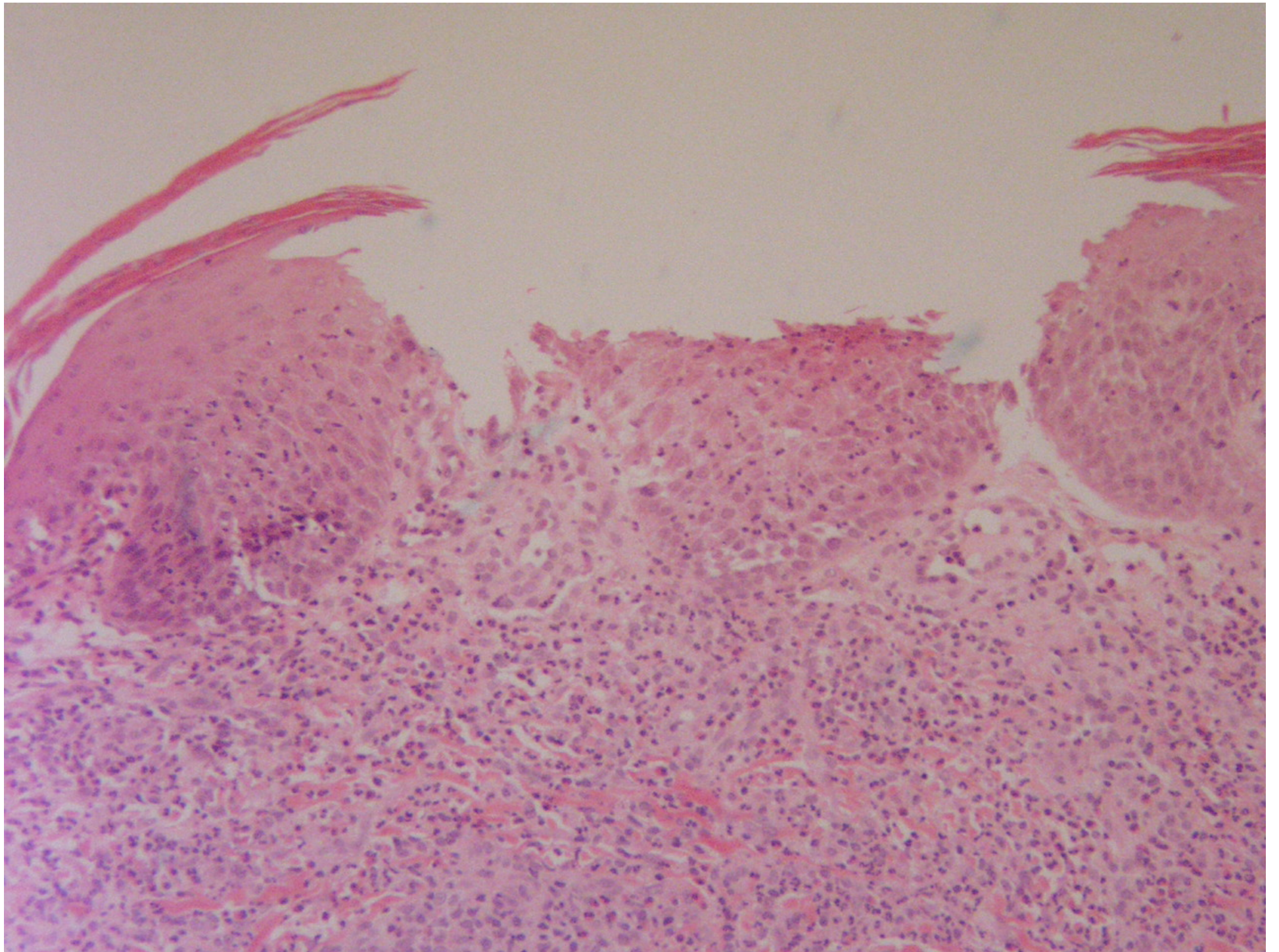
Scabies

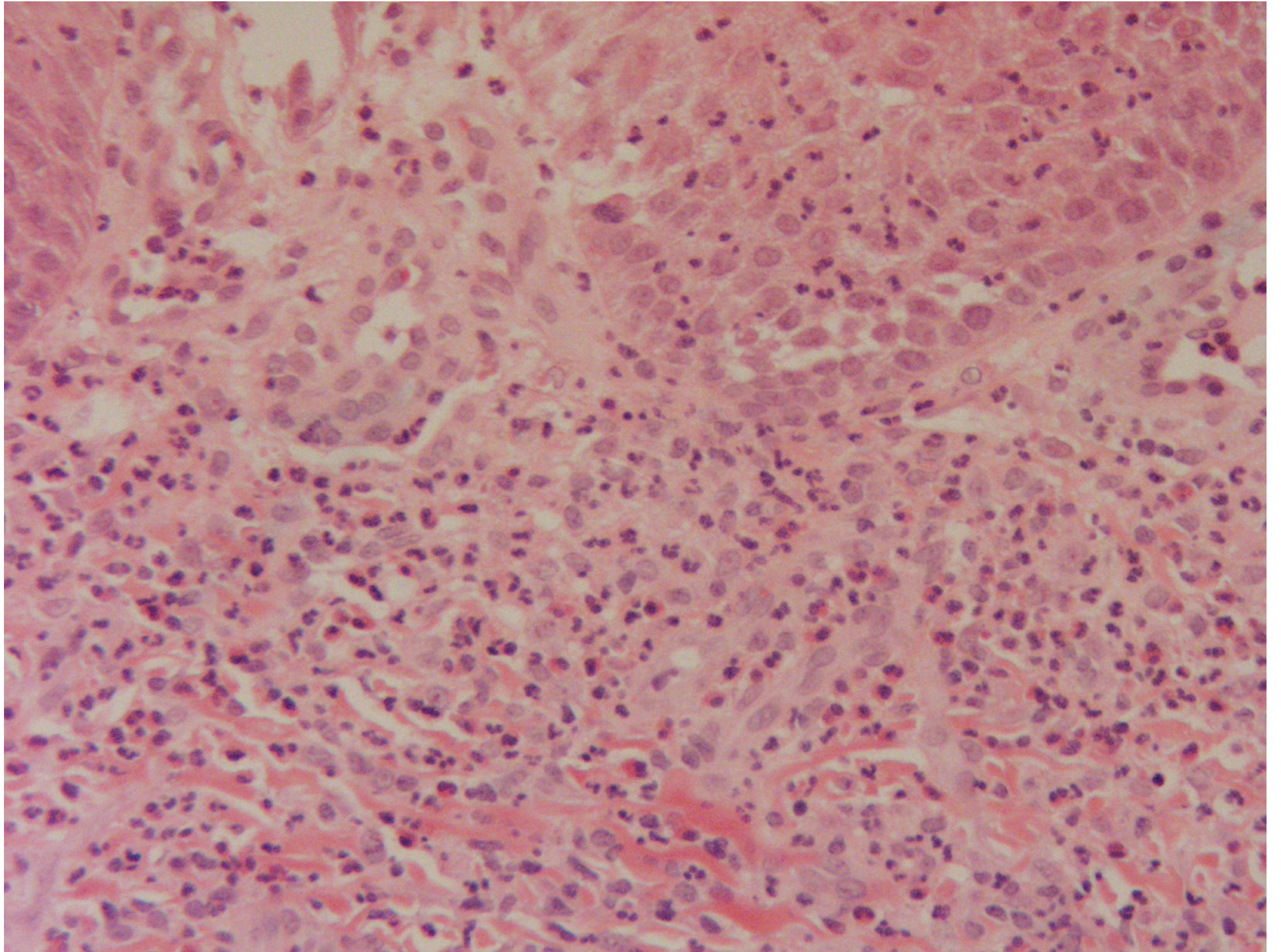
Histopathology

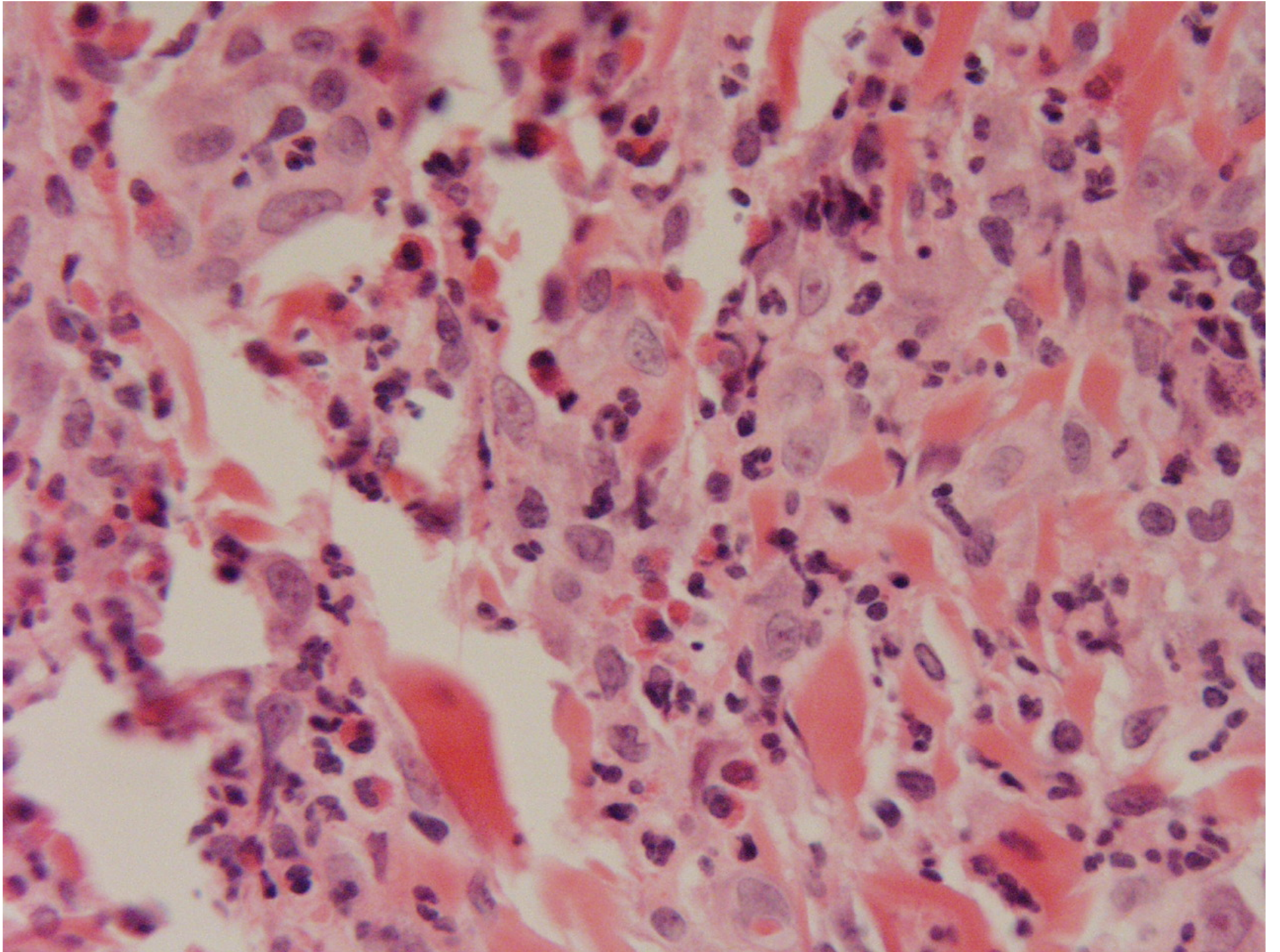


- Numerous plasma cells and eosinophils
- Deeper levels to exclude mite or scybala
- Dermal eosinophilic fibrotic nodules in kids
- Rule out scabid reaction



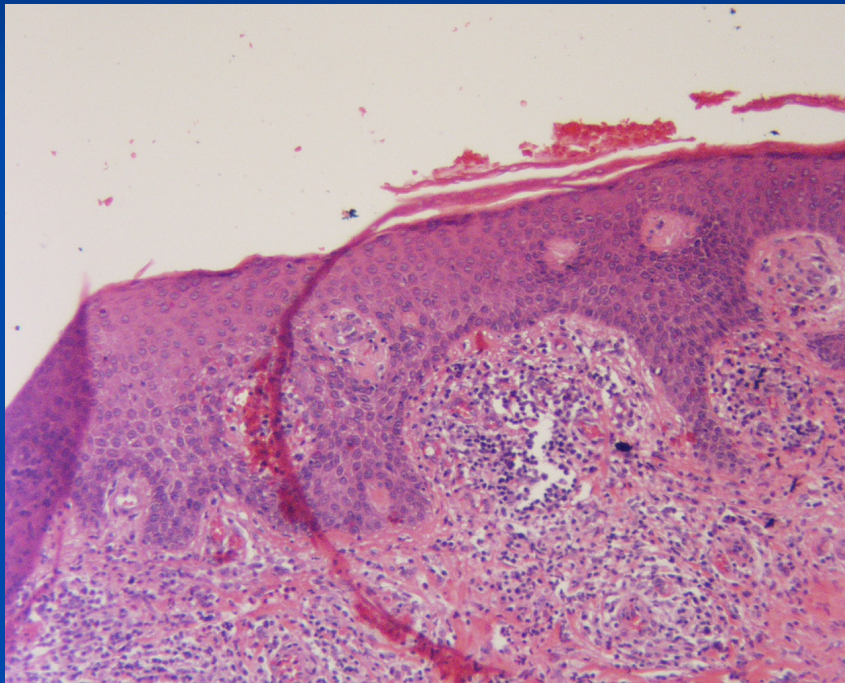




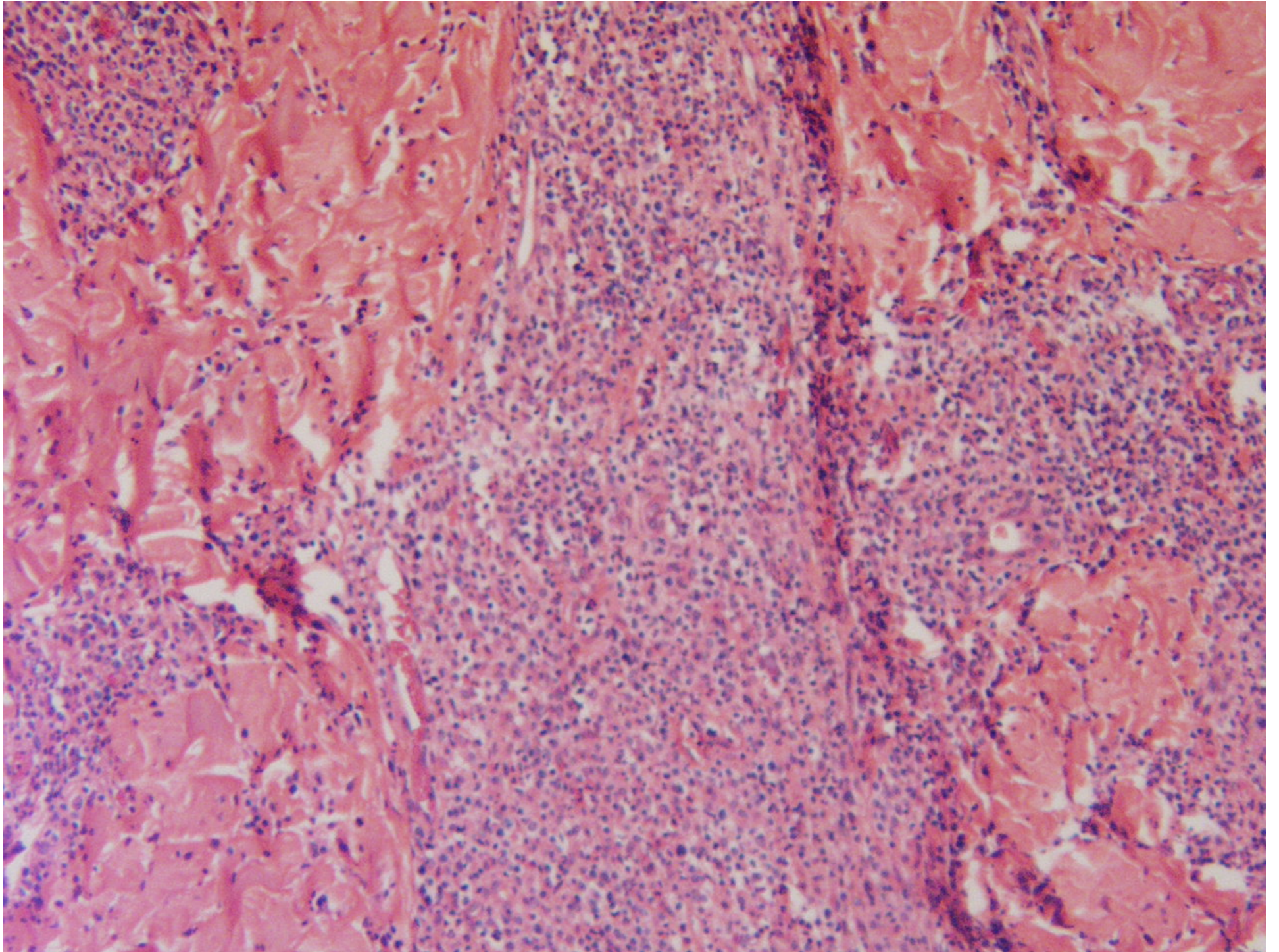


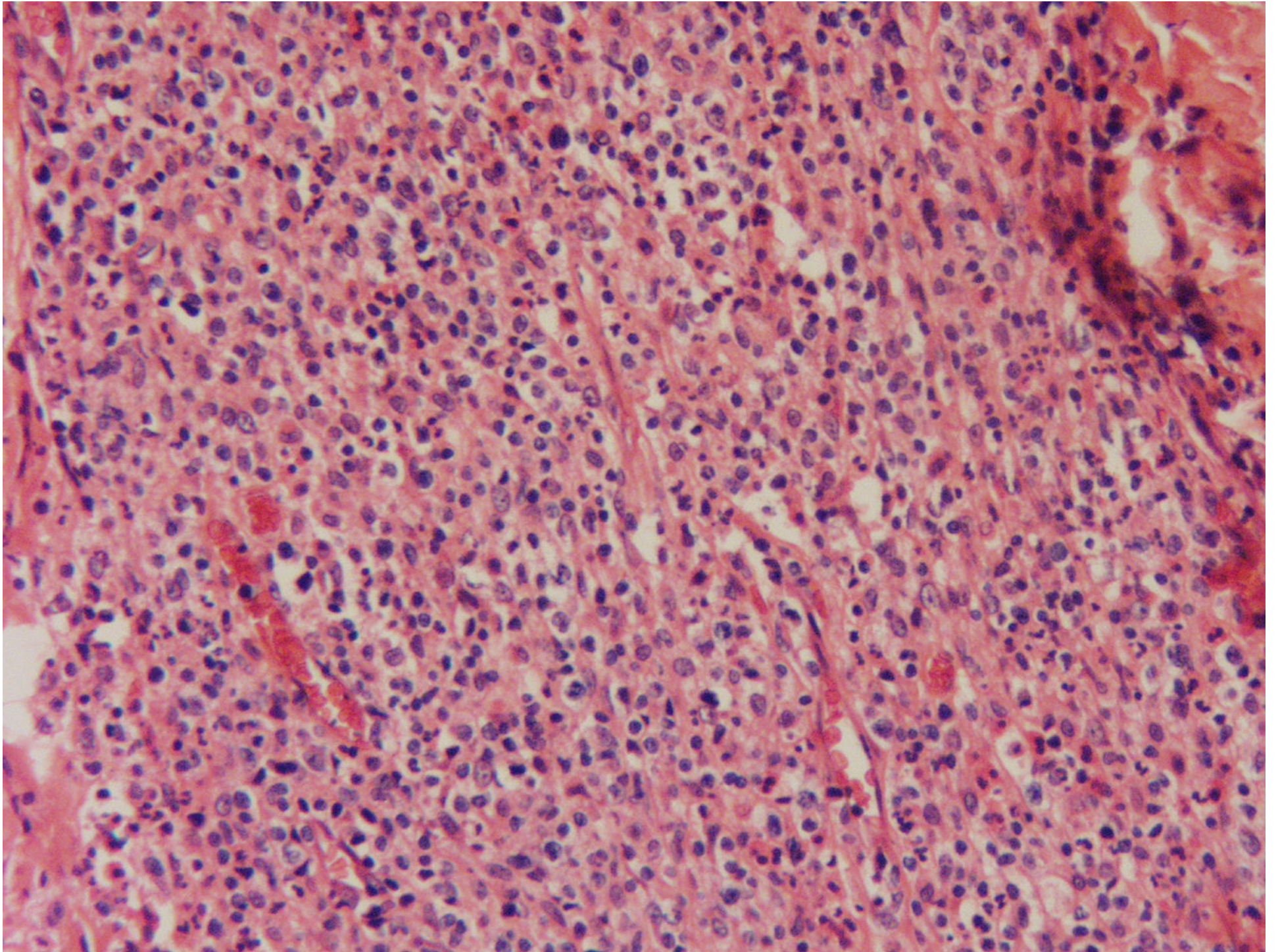
Arthropod Bite Reaction

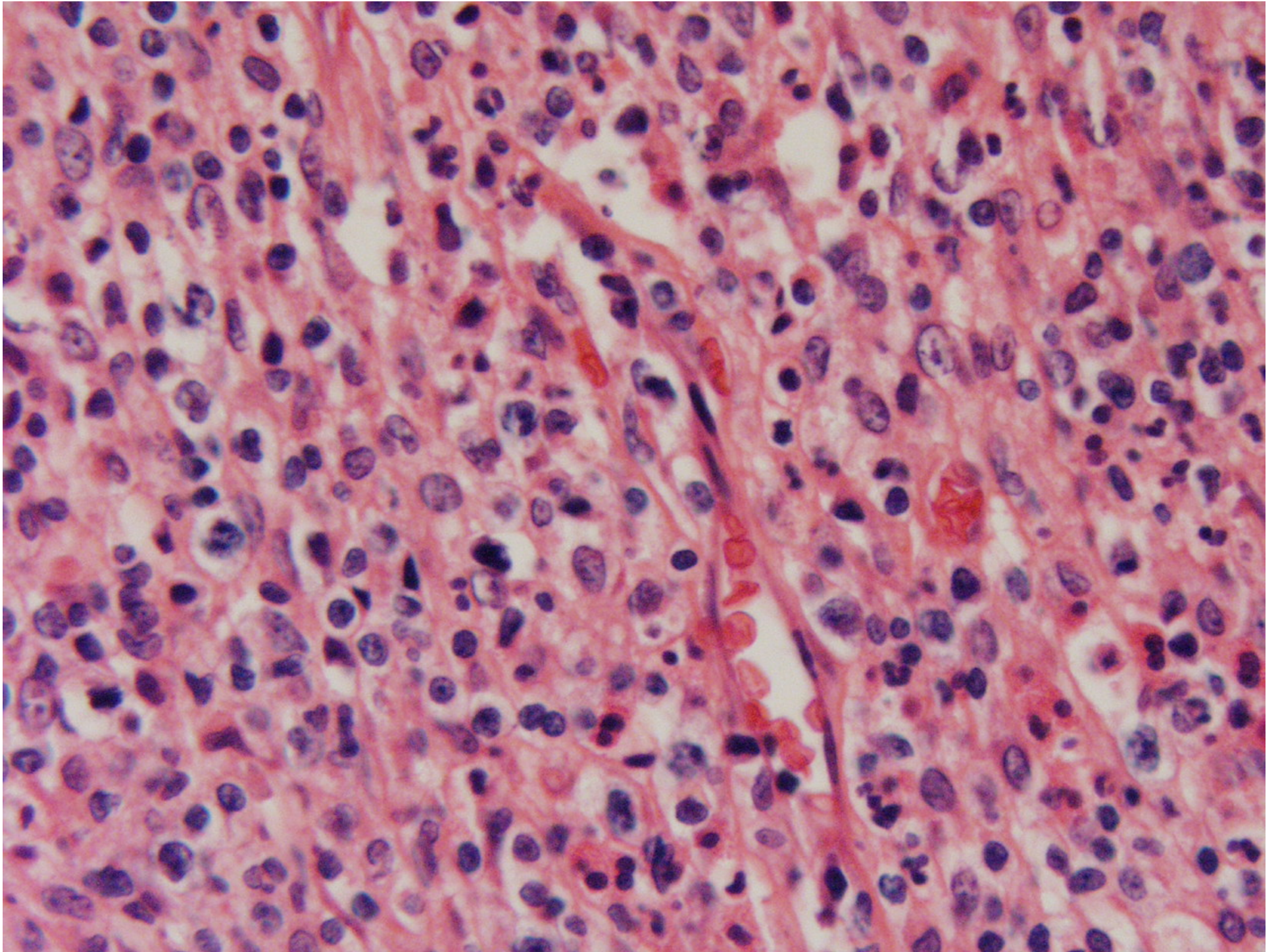
Histopathology



- Centrally positioned intraepidermal vesicle, especially with some necrotic keratinocytes
- Infiltrate extends into subcutis
- May be folliculocentric

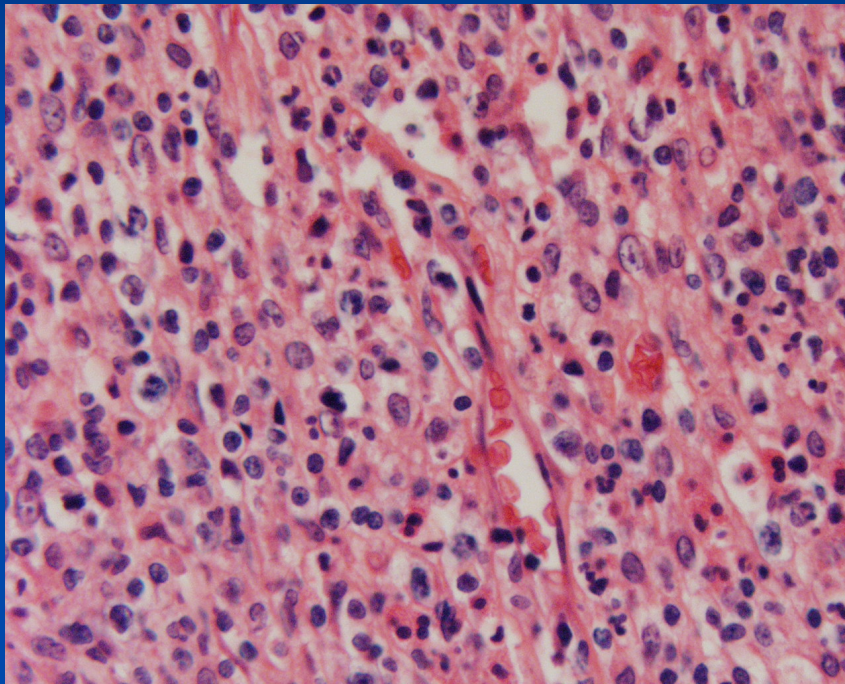




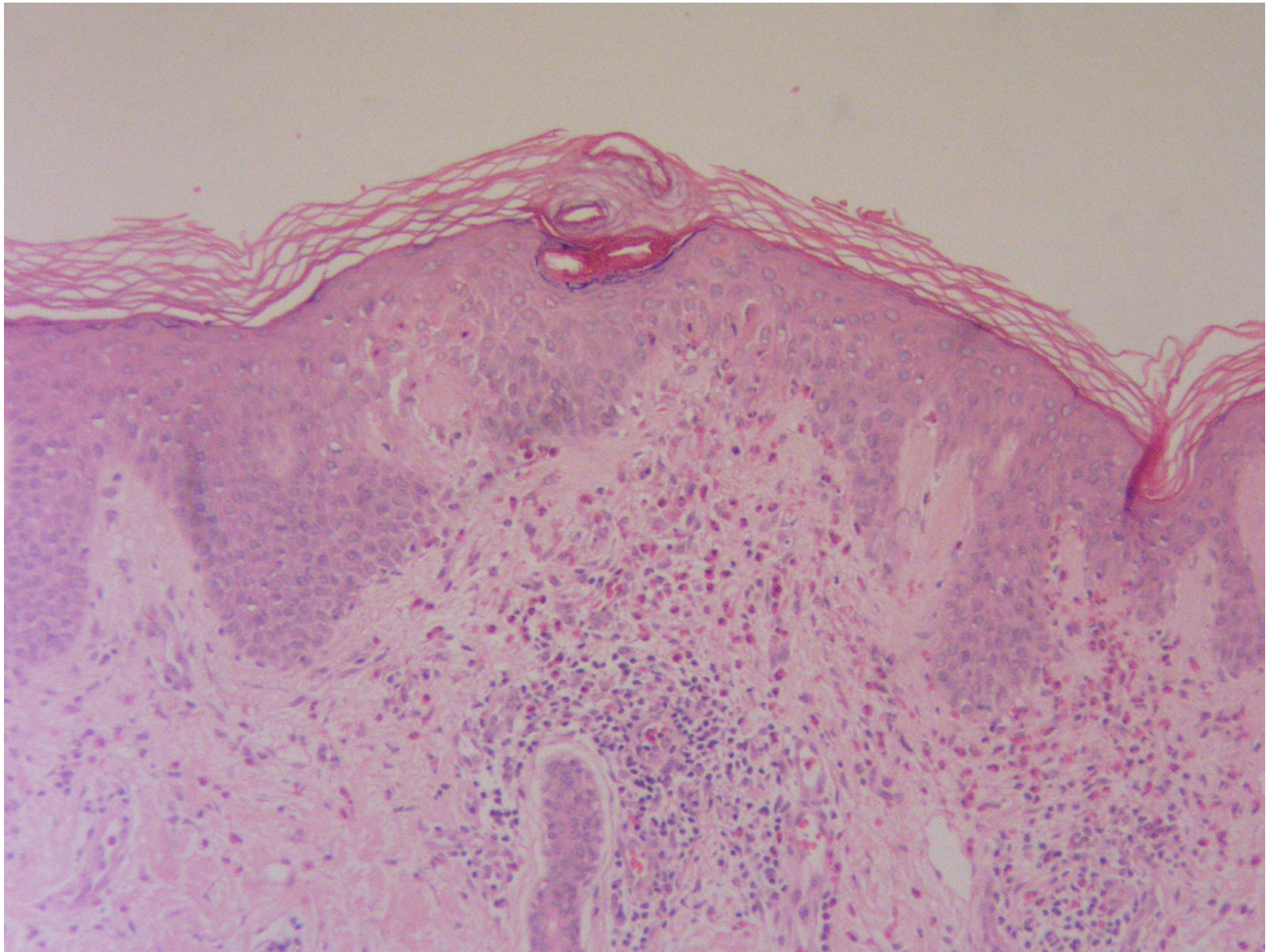


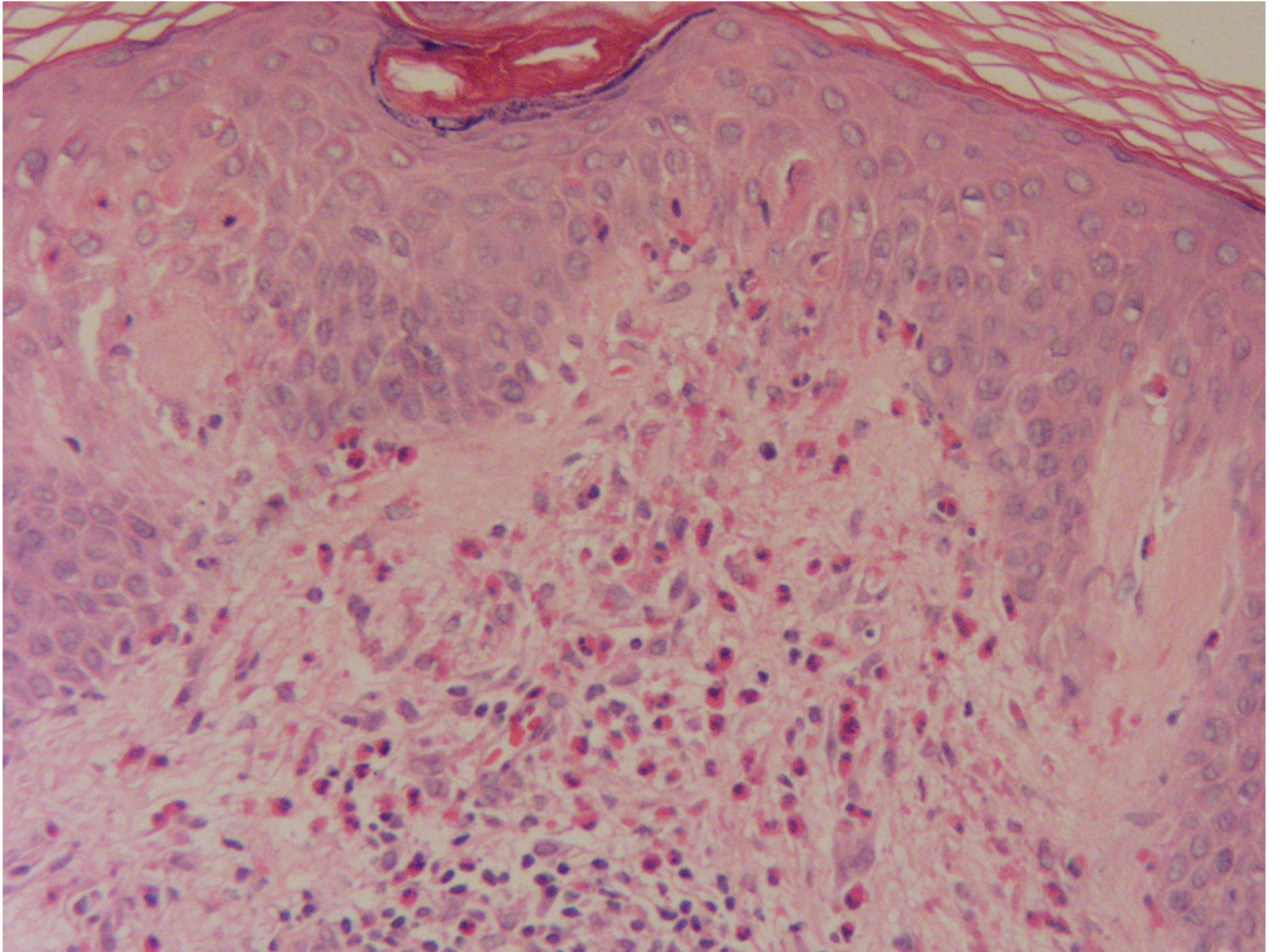
Eosinophilic Folliculitis

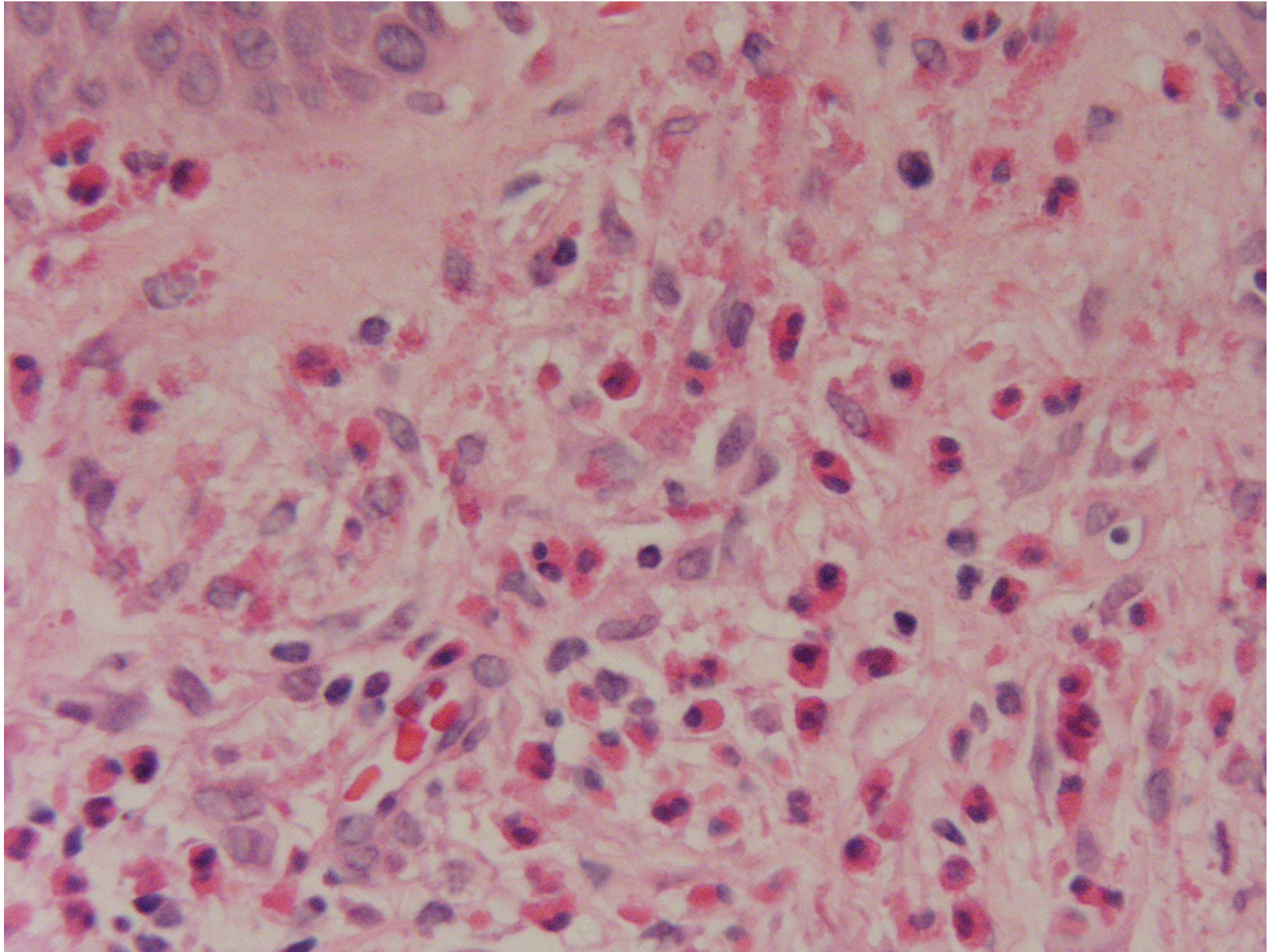
Histopathology



- Many eos in follicular epithelium, esp. sebaceous lobules
- Variable histopathology
- Rule out HIV
- Correlation with CD4 count

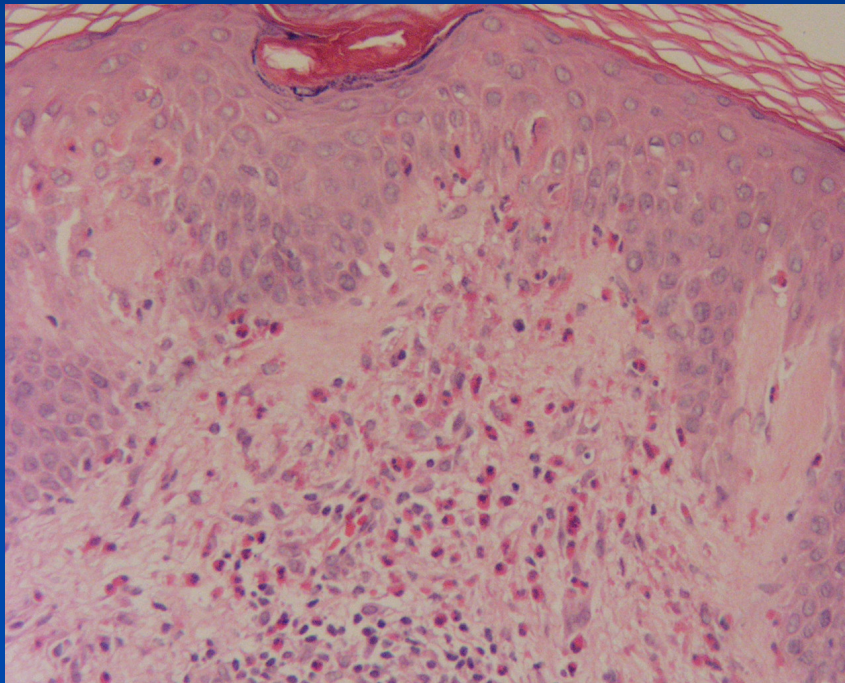




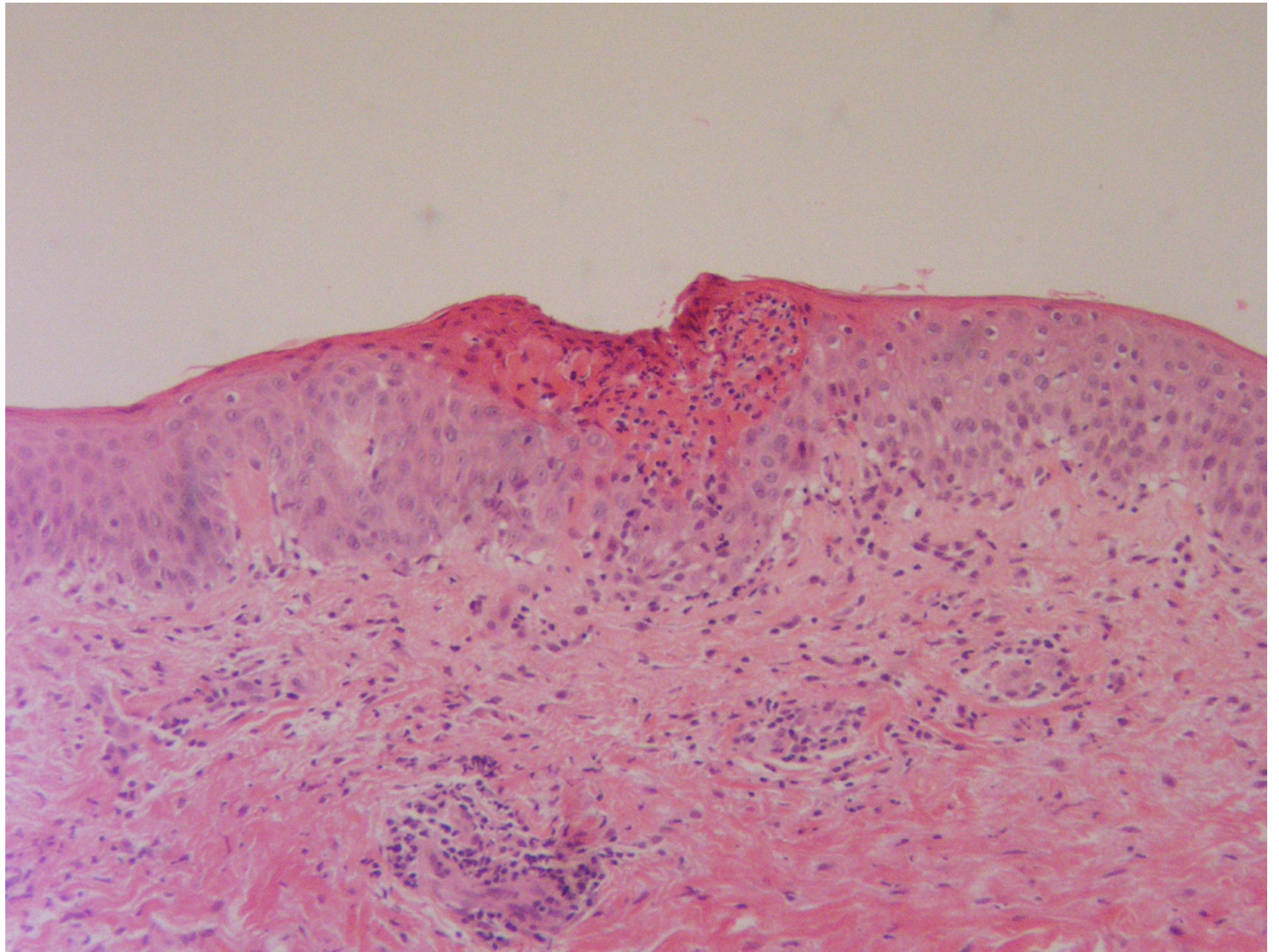


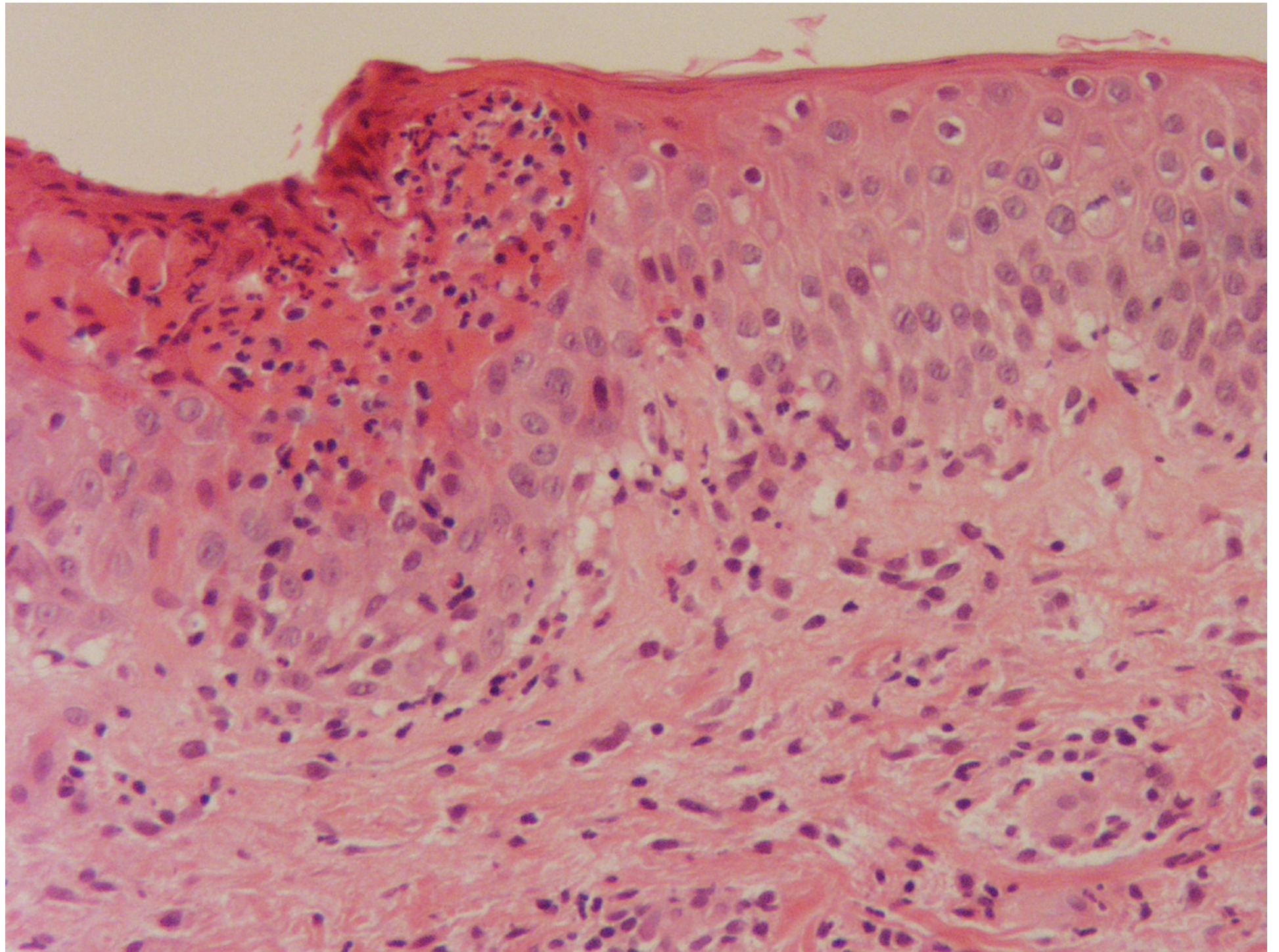
PUPPP
**(Pruritic Urticarial Papules and
Plaques of Pregnancy)**

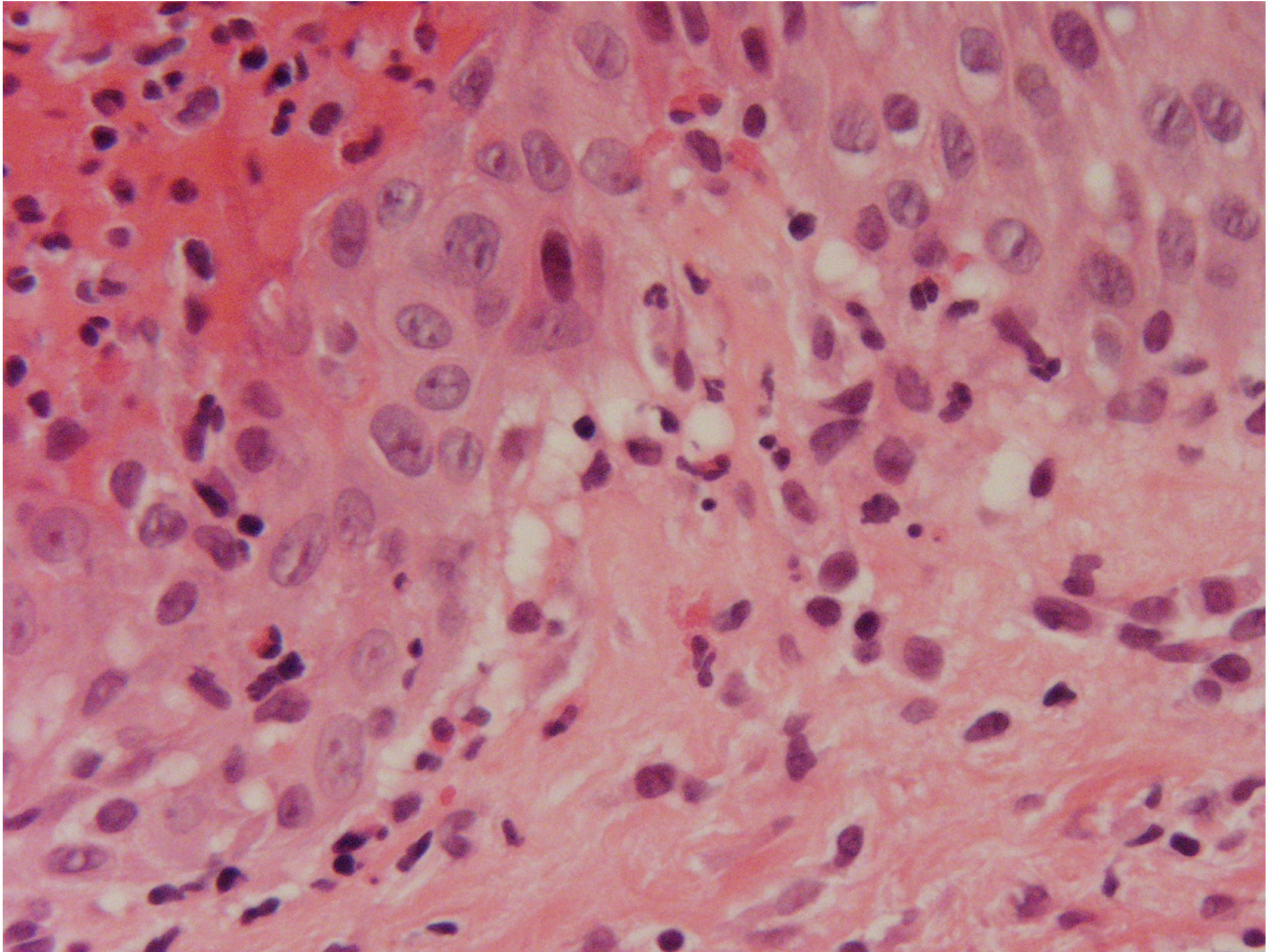
Histopathology



- Several small foci of spongiosis, randomly distributed
- Variable histology with occasional vesicular change
- Rule out herpes gestationis

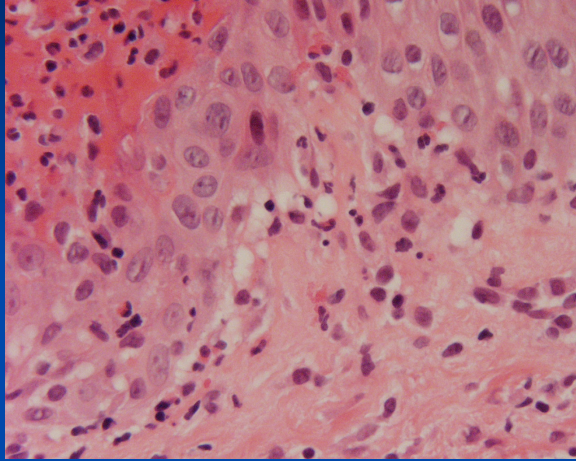




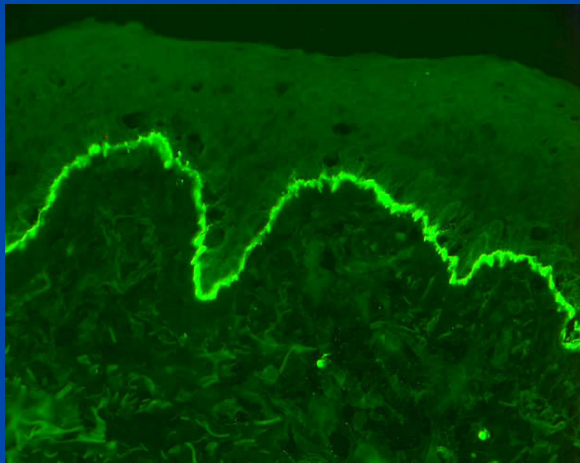


Bullous Pemphigoid-Urticarial Phase

Histopathology



- Eosinophils along DE junction
- May mimic an interface dermatitis
- Confirm with DIF



CLUE	DIAGNOSIS
Epidermal hyperplasia and hyperkeratosis	Not idiopathic urticaria
Centrally positioned intraepidermal vesicle, especially with some necrotic keratinocytes	Arthropod assault
Infiltrates extending into subcutis	Arthropod assault
Infiltrates around, but not much within follicles	Arthropod assault

CLUE	DIAGNOSIS
Eosinophils along DE junction	Urticarial stage of Bullous pemphigoid
Many plasma cells and histiocytes	Scabies
Burrow or mite (in level sections)	Scabies
Spongiosis (in level sections)	Conventional spongiotic dermatitides, drug eruption

CLUE	DIAGNOSIS
Several small foci of spongiosis, randomly distributed	PUPP
Many eos in follicular epithelium, esp. sebaceous lobules	Eosinophilic folliculitis

References

- Am J Dermatopathol 2004;26(6):516-517